

MONTHLY MEMBERSHIP PROGRESS REPORT

LOCATION INDIA

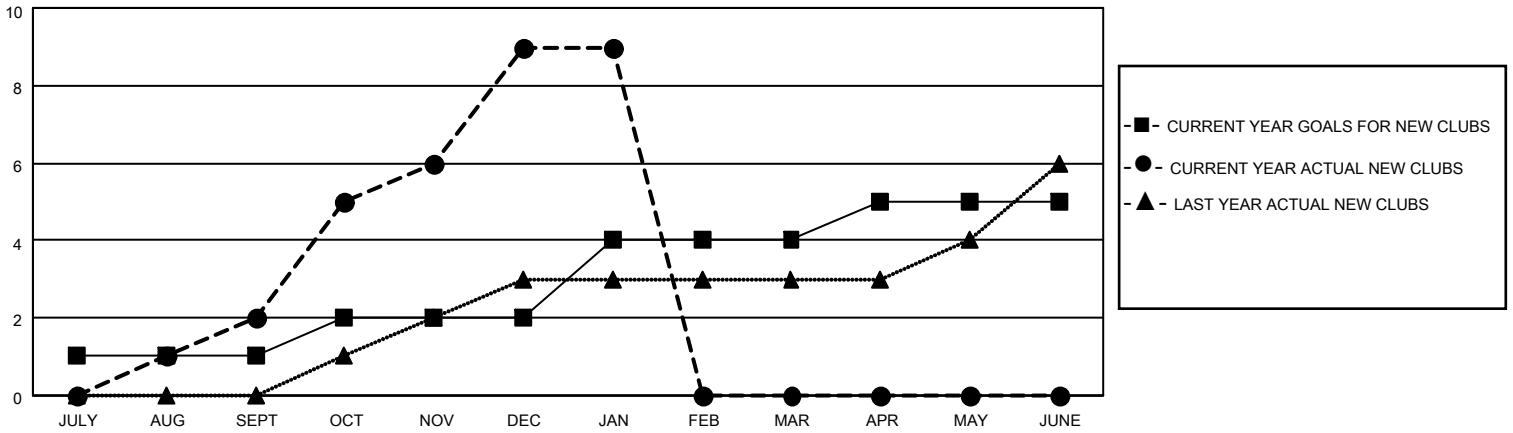
District 320 F

Results as of: 1/31/2021

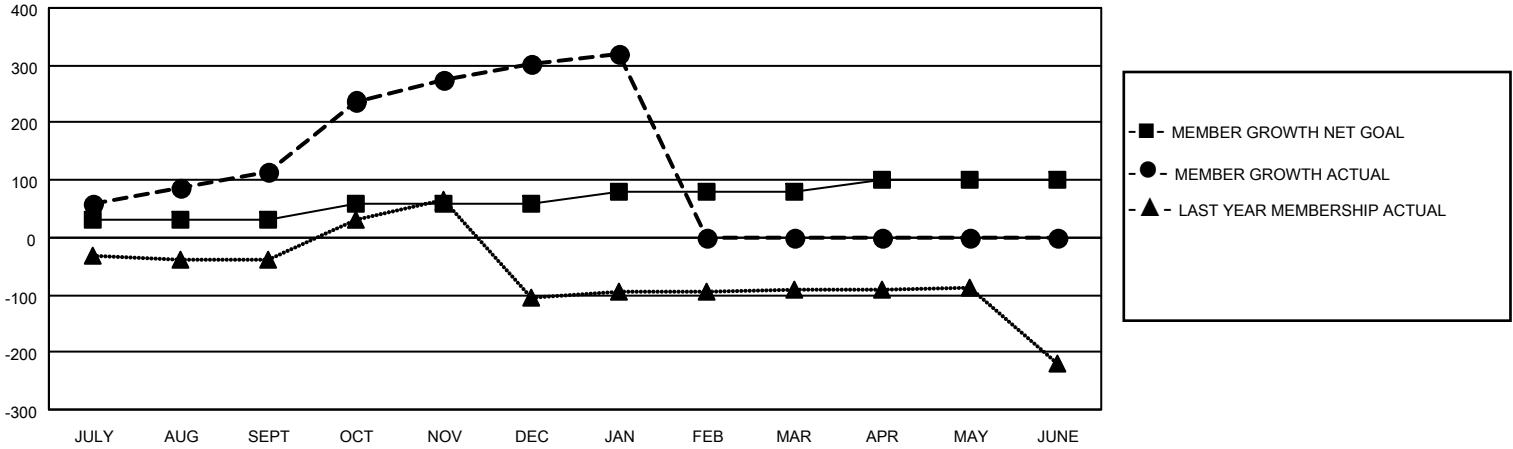
Clubs			
RESULTS FOR 2020-2021			
QUARTER	NEW CLUB GOAL	NEW CLUBS	DROPPED CLUBS
JULY/AUG/SEPT	1	2	1
OCT/NOV/DEC	1	7	0
JAN/FEB/MAR	2	0	0
APR/MAY/JUNE	1	0	0

Members			
RESULTS FOR 2020-2021			
QUARTER	MEMBER GROWTH NET GOAL	MEMBER GROWTH ACTUAL	DROPPED MEMBERS ACTUAL (including transfers)
JULY/AUG/SEPT	30	175	55
OCT/NOV/DEC	30	341	151
JAN/FEB/MAR	20	19	2
APR/MAY/JUNE	20	0	0

GOALS AND ACTUAL NEW CLUBS CUMULATIVE



GOALS AND ACTUAL MEMBERS CUMULATIVE



DROPPED CLUBS: 1

52 CLUBS OF 81 ADDED 1 OR MORE NEW MEMBERS

<u>GENDER DISTRIBUTION</u>	
MALE	2,075 (77.37%)
FEMALE	607 (22.63%)

<u>DROPPED MEMBERS</u>	
DECEASED	13
CLUB CANCELLED	0
OTHER	195
TOTAL	208

[CLICK HERE FOR CUMULATIVE MEMBERSHIP DATA](#)

TOTAL FAMILY UNIT MEMBERS	966
FAMILY MEMBERS PAYING HALF DUES	561